



Mission Statement

FordHaven CIC

14440228

'Making memories through positive connections'

FordHaven is an independent organisation which provides a safe environment for spending time together for children and young people, and their families who may be;

- ❖ Requiring supportive intervention
- ❖ Experiencing barriers to learning
- ❖ Experiencing separation from siblings and other family members
- ❖ Suffering with low self-esteem or lack confidence
- ❖ Children and young people with mild to moderate learning difficulties
- ❖ Children who have low emotional literacy skills
- ❖ Survivors of abuse or domestic violence
- ❖ Children at risk of Child Sexual Exploitation (CSE) or Child Criminal Exploitation (CCE)
- ❖ Children at risk of going missing
- ❖ Experiencing the impact of grief, loss or trauma
- ❖ Vulnerable or marginalised
- ❖ Unaccompanied minors

Developing, maintaining, repairing and re-establishing relationships is at the heart of what we do.

The services we offer address the attachment needs, mental health and wellbeing of children and young people affected by all of the above. Supporting them to overcome their personal barriers.

We are committed to supporting children and young people in becoming the best versions of themselves, achieving positive outcomes through our interactions and relationships.

FordHaven has a child centred approach and all children and young people will;

- ❖ Feel safe
- ❖ Have a voice and feel valued
- ❖ Feel respected and reciprocate this to others
- ❖ Make positive memories that will last a lifetime

At FordHaven children and young people are given a nurturing, caring environment to help them build positive relationships to benefit them now and in their future.

FordHaven is committed to equality and inclusivity and is demonstrated throughout our core values.

Our core values are;

Identity & Fairness
Integrity & Mutual Respect
Empathy & Compassion
Accountability & Partnership

These values are reflected in the services we provide with the adults being positive role models and the environment having been created with the children and young people in mind.

At **FordHaven** we encourage children and young people to value their individuality and develop a sense of pride.

When these values are embraced and followed, they help to build a fair, inclusive, and respectful community in which everyone's identity is honoured, fairness is upheld, integrity is respected, and mutual respect is encouraged.

FordHaven was created out of the need for compassion & empathy for children & young people. We empathise with everyone by carefully listening and understanding their perspective. We demonstrate compassion by showing kindness and care to others throughout all that we offer.

We work in partnership with all structures and organisations to enable best outcomes for all.

FordHaven believe in honest, transparent accountability. We take our responsibilities towards children and young people seriously as demonstrated in our policies & procedures.

See Appendix 2

FordHaven Sessions

Family Support

FordHaven supports families to overcome and work through difficulties and encourages healthier relationships.

We offer time to families in a supportive environment that is neutral and independent of other agencies.

Families will have sole use of the space at **FordHaven** during each visit.

We support separated families by offering a safe and neutral transition space.

Home Ed Support

There are many reasons children are home educated, for some families this is a clear choice as an alternative to school education.

For others out of education the families are aiming to integrate children into suitable learning environments.

FordHaven aims to enable children and young people to socialise and learn through play and art. This can make for an easier transition into their next steps.

It's important to be able visit a different setting and vary a child's experiences when home educating and **FordHaven** offers this. This can include working with families to offer bespoke support.

All our activities are offered in small group sessions to maximise the benefit of time spent at **FordHaven** for each child.

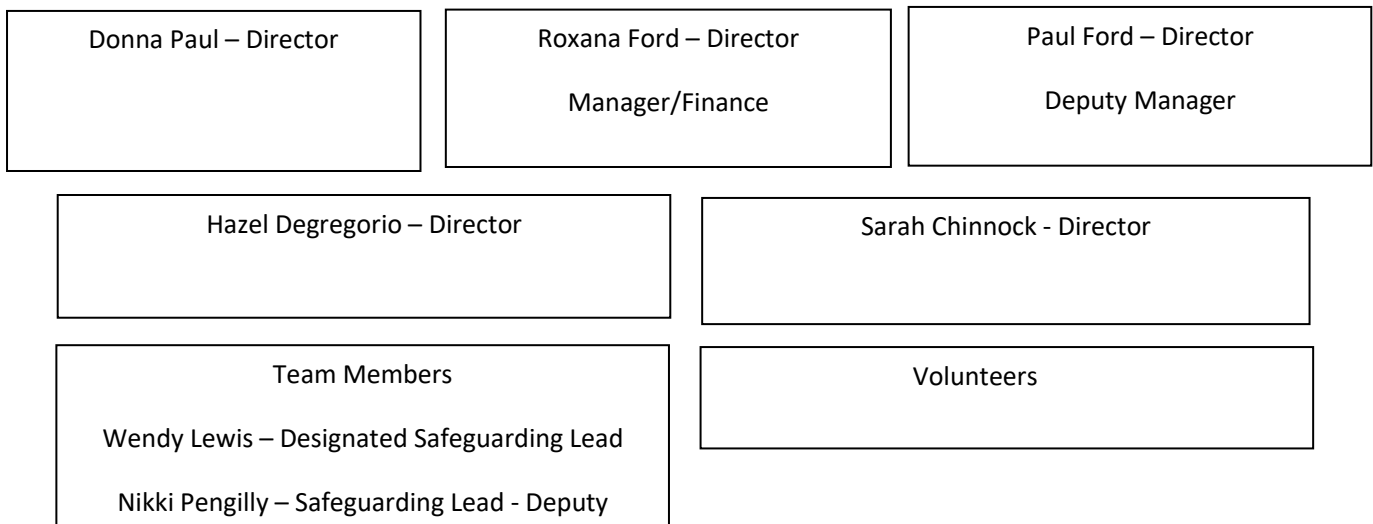
School Support

We work with schools as an additional resource to enable children who find their education setting a challenge, the opportunity to spend time at **FordHaven** and take part in all that we have to offer.

FordHaven School Support offers children, regular and planned time out of their school setting. In conjunction with the school an individualised plan to meet the needs of each child will be developed and reviewed.

Evidence shows that recalibrating in a different environment can help children to achieve their potential when in school.

Appendix 1. Organisational Structure



Appendix 2. Policies

See all of our policies on our website.

[Policies \(fordhaven.org\)](https://www.fordhaven.org/policies)

<https://www.fordhaven.org/policies>